



Appendix B: Peachland Park and Trail Standards



Community Parks

Centrally located to the community, 10 minute walk to most residents, near schools, recreation centres, may be connected to other parks with trails

Targets:

Size:

Supported Uses:

Road Frontage:

Infrastructure may Include:

Parking/Transit:

Safety Features:

Washrooms:

Examples:

Development Guidelines

- Minimum 2ha to 5ha (5 to 12.5ac)
- Active recreational opportunities, play area, sports fields, multi use court, tennis, hockey, basketball, general gathering area can include urban plaza for community celebrations.
- On two sides
- Benches, goal posts, lighting, washroom/change rooms, bike rack, fencing, playgrounds, skate park, water park
- Parking lot with disabled parking to support accessibility; Park should be located on transit route
- Security lighting
- Available within or adjacent to park
- Cousins Park, Lambly Park, Centennial Park, Heritage Park



Neighbourhood Parks

Central to the neighbourhood, 5 to 10 minute walk for local residents, small play area, small grass area to serve the needs of catchment area and demographics.

Targets:

Size:

Supported Uses:

Road Frontage:

Infrastructure may Include:

Parking/Transit:

Safety Features:

Washrooms:

Examples:

Development Guidelines

- Minimum .2 to 4ha (.5 to 9.8 ac), preferably at least 1ha (2.5ac) in area. If < .2ha considered a “pocket park”.
- Active and passive parks that provide informal sports fields, playgrounds, community gardens, dog parks and non-bookable space. Park can be built in conjunction with a school or a site specific need such as a heritage park or preservation of unique cultural, architectural and ecological features. Serves a small local area in close proximity to residents, employment and/or commercial areas; important social and psychological role as a respite from workday routine.
- On one side
- Benches, picnic tables, playground equipment, grass and trees, fencing
- Access is usually by walking so parking lot may not be required.
- Security lighting, bike rack
- Not required unless there is a strong demand by neighbours or that the park has amenities that draw people from longer distances.
- Gillam Park, Morrison Park, Law St. Park, Bowes Park, Thompson Park, Huston Rd. Park, Chudyk/Trepanier Park, Chevallier Park, Knoblauch Park



Linear Parks and Greenways

Located in key parts of the community, creates links within and to other communities. Serve all forms of non-vehicular movement as part of the transportation network, but are not sidewalks, statutory right of ways, or bike lanes.

Targets:

Size:

Supported Uses:

Road Frontage:

Infrastructure may Include:

Parking/Transit:

Safety Features:

Washrooms:

Examples:

Development Guidelines

- Minimum 10m width
- Established to support a network of trails through the community to interconnect or link parks, trails and greenways to schools, commercial and institutional uses
- Benches, staging areas and trail entry points.
- Parking lot with support for universal accessibility
- Lighting at trail/road intersections.

Trepanier Creek Linear Park, Centennial, Trepanier Creek Park



Natural Area Parks

Publicly owned parks and open space.

Targets:

Size:

Supported Uses:

Road Frontage:

Infrastructure may Include:

Parking/Transit:

Safety Features:

Washrooms:

Example:

Development Guidelines

- Minimum 2 to 5ha (12.5ac)
- Established for natural and environmentally important and sensitive areas such as wetlands, hillsides, ravines, forested or stream/waterfront areas with recreation opportunities or with historic or cultural resources. Also, include ecological conservation or preservation areas and environmentally sensitive park development. They provide trail linkage to greater community parks or trail network.
- On one side
- Benches, signage, trails, gathering areas
- Parking lot
-
- Should be available
- Forest Hill Drive Park, Mountain View Park, Victoria St. Park, Peachland Heights Park, Hardy Park, Vernon Av/Deep Creek Park Pincushion Park (Undeveloped Park: MacKinnon Rd.)



Town Plaza Parks

Located in areas of high pedestrian activity, and gathering places

Development Guidelines

Size:

- Minimum .2 ha to .8 ha

Potential Use:

- Established as a significant public space set aside for civic purposes. High quality spaces with attention to pedestrian amenities, accessibility and adjacent commercial civic uses. Promote arts and culture by integrating public art and programmed activities.

Road Frontage:

-

Infrastructures:

- Includes special paving, ornamental plantings and street furniture, often includes water features, town clocks, special community feature.

Parking/Transit:

- Located on transit route

Safety Features:

- Security lighting,

Washrooms:

- Should be available within municipal or commercial facilities

Examples:

-



Other Park Types

Waterfront Parks and Road Ends:

- Publicly owned park and accesses established to provide public access to Okanagan Lake; serve a variety of recreational functions, both active and passive, swimming, sunbathing, boat launches, dog parks and beach walking

Regional Parks:

- Publically owned parks that are established within the District of Peachland Boundaries, where ownership and maintenance responsibilities have been given to the Regional District of Central Okanagan. These parks are not a component of the municipal parks system.

Open Space:

- Established to include city owned natural areas which are primarily unsuitable for urban development, e.g. gullies, steeply sloped lands ESA 1 areas. These areas should not be included with the 5% parkland dedication; They often contain informal undesignated trails.
- Protected lands not publicly accessible can be included but are not a component of the municipal park system.

Cultural Parks/landscapes:

- Park space dedicated to protection and celebration of local cultural identity including historically or architectural significant features.
- Burdikin Park, "T" Boat launch, Cove Beach Hardy Falls 13th St. Viewpoint, Trepanier Bay Park

Undeveloped:

- Held in reserve for future use: Morrison & Sanderson



Urban Dog Park

Dedicated to off leashed large and small dog socialization in an urban area.

Targets:

Size:

Supported Uses:

Road Frontage:

Infrastructure may Include:

Parking/Transit:

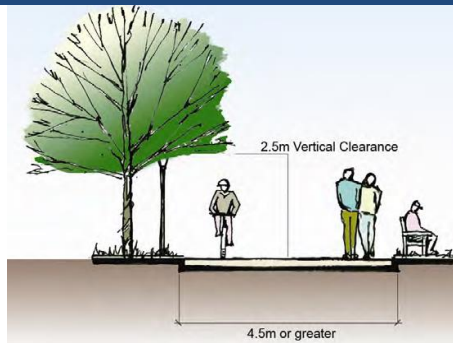
Safety Features:

Washrooms:

Examples:

Development Guidelines

- Typically under 0.2ha;
- Serve dog owners in urban areas providing play, physical and social activity for both owners and pets.
-
- Benches, water, doggy waste bags, receptacle, grass and trees, dog play area may be sand or gravel
- Appropriate to size of park.
- May dedicate structured times for large versus small dog use, fenced and gated area
-
- May be included as a community or neighbourhood park



Waterfront Promenade

Fronting Okanagan Lake; major urban route linking waterfront neighbourhoods

Supported Uses:

- Walking, jogging, cycling, wheelchairs, rollerblades, general passage by all ages, maintenance vehicles

Surface:

- Hard surface, with all or some special paving, pavers or stamped concrete. The base should be solid granular with full drainage as required.

Longitudinal Slope:

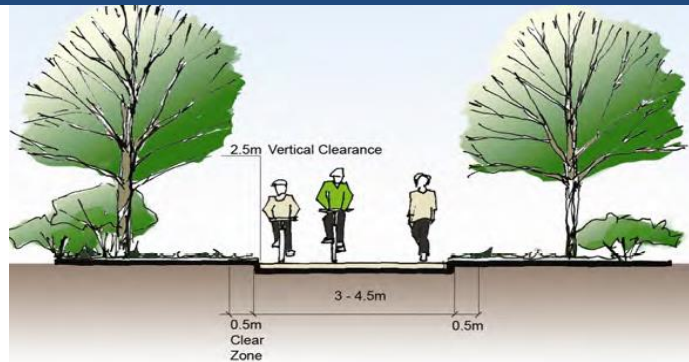
- Maximum 5% (1:20) with short ramps up to 8% (1:2) follow Universal Accessibility Guidelines.

Accessibility:

- Universally accessible throughout, including access points, wheelchair preference is a 2m wide surface of asphalt, or saw-cut concrete.

Infrastructure may Include:

- Pedestrian lighting, benches, points of interests, staging areas with parking, kiosks, signage, waste receptacles, and bollards.



Standard Multi-Use Trail

Parks, creek corridors, irrigation flumes.
Significant routes through
neighbourhoods, secondary routes

Supported Uses:

- Walking, jogging, cycling, wheelchairs where possible, equestrian in select locations, maintenance vehicles

Surface:

- Hard surface, with well compacted aggregate. The base should be granular. (5-6m Right of Way with 3-4.5m travel surface)

Longitudinal Slope:

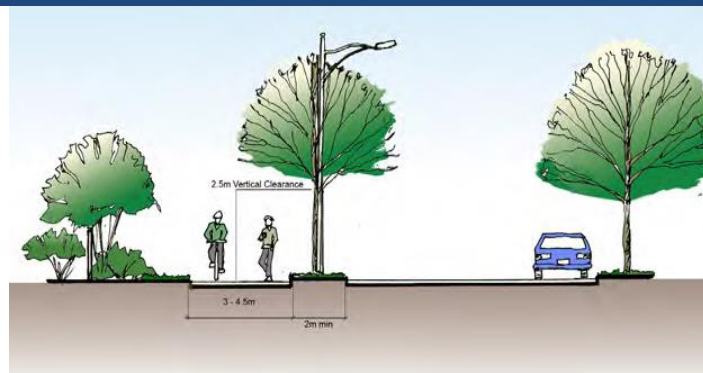
- Maximum 8% (1:120) where possible with maximum 15% (1:7)

Accessibility:

- Universally accessible where possible, including access points to accessible portions.

Infrastructure may include:

- Benches, small staging areas with parking, kiosks, signage, waste receptacles, bollards, pedestrian lighting where possible. Require a 2.4m width minimum service vehicle travel path.



Roadside Corridor Trail

Road Corridors. Along Major routes through the District; outside of the road right-of-way (not a sidewalk)

Supported Uses:

- Walking, jogging, cycling, wheelchairs, general passage by all ages, maintenance vehicles.

Surface:

- Hard surface, wheel path, with hard surfaced or well compacted aggregate pedestrian path. Wheel and pedestrian paths can be separated or combined. Trail base of solid granular with full drainage as required. (5-6m Right of Way with 3-4.5m travel surface)

Longitudinal Slope:

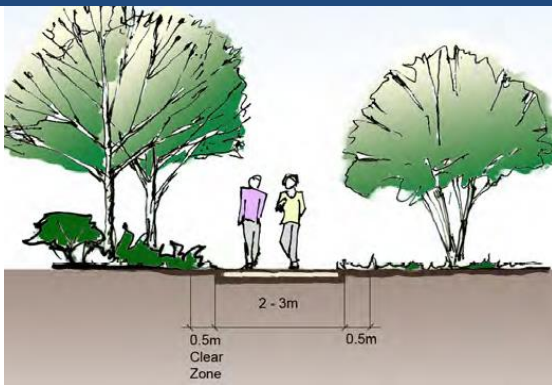
- Maximum 8% (1:12) with maximum 12% (1:8) for short sections.

Accessibility:

- Universally accessible where possible, including access points to accessible portions, may include stairs when required.

Infrastructure may include

- Benches, occasional points of interests, kiosks, and signage, pedestrian lighting where appropriate, waste receptacles, and bollards.



Narrow Multi-Use Trail

Parks, creek corridors, natural areas, ponds, irrigation flumes, locations with space limitations. Connections to major routes.

Supported Uses:

- Walking, jogging, mountain biking

Surface:

- Aggregate hard surface, granular base. (4m Right of Way with 2-3m travel surface)
-

Longitudinal Slope:

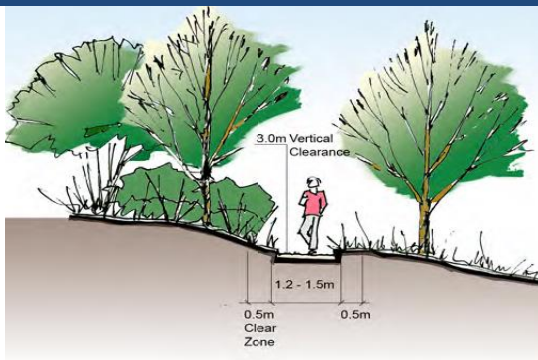
- Maximum 8% (1:12) where possible, otherwise maximum 15% (1:7)

Accessibility:

- Universally accessible where possible, including access points to accessible portions.

Infrastructure may include:

- Occasional benches, occasional staging areas, kiosks, signage, waste receptacles, and bollards.



Nature Trails

Natural and rural areas, creek corridors, lower use locations

Supported Uses:

- Walking, mountain biking, hiking, (usually 1 or 2 uses designated) .

Surface:

- Natural ground, aggregate where needed. (4m Right of Way with 1-2m travel surface)
-

Longitudinal Slope:

- Maximum 20% (1:5) without infrastructure.

Accessibility:

- Limited.

Infrastructure may include:

- Kiosks, signage, waste receptacles, structures for slopes over 20% e.g. steps, step/ramp, landings, railings. And bollards.